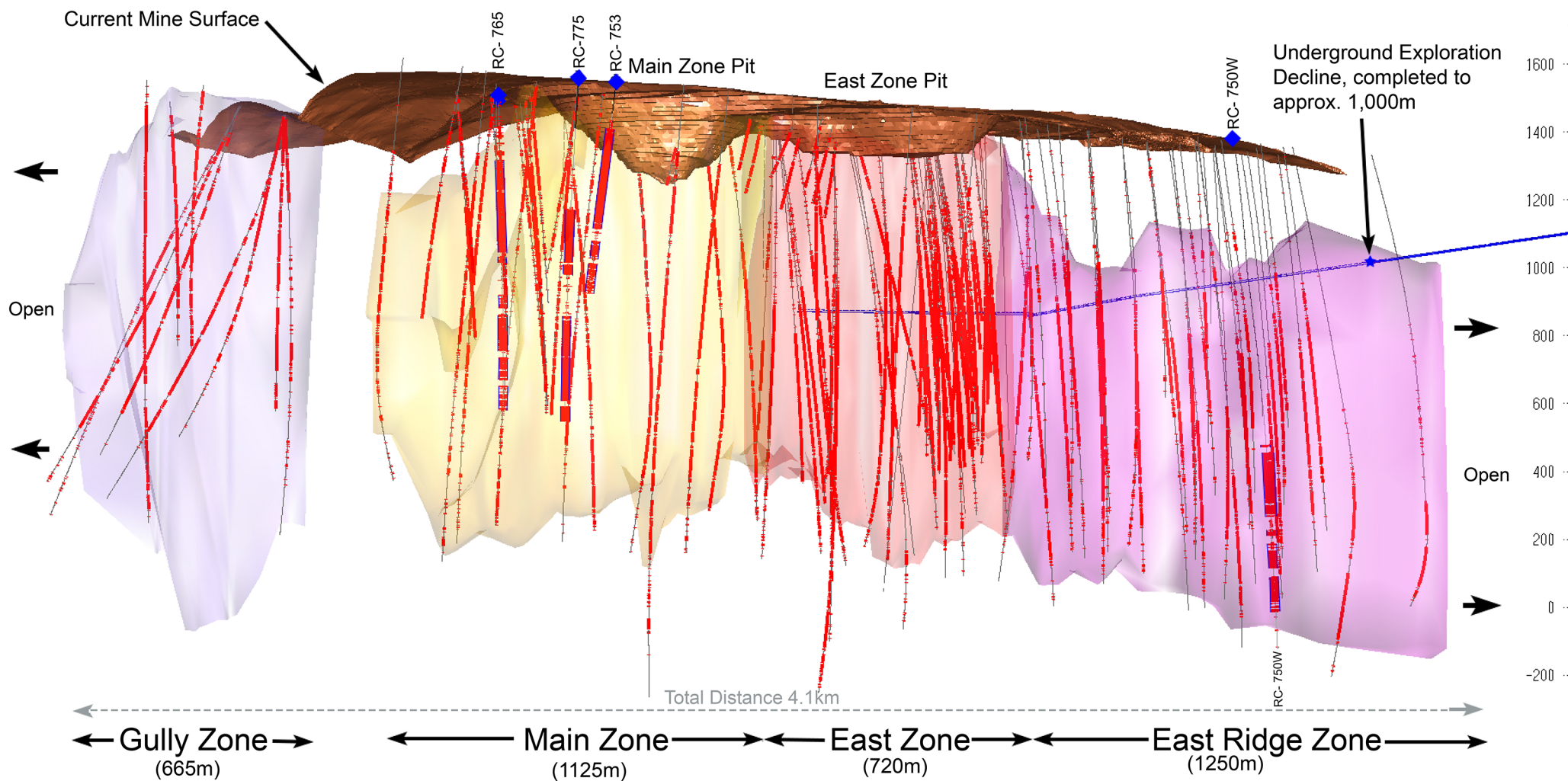



Red Chris Mine: 2019/20/21 Drilling and Deposit Zones



Section looking Northwest @ 338 degrees

0m 200m 400m 600m 800m

SCALE



Imperial Metals

3D View showing exploration holes drilled in 2019/20/21 by Newcrest Red Chris Mining Ltd.

Mineralized intervals over 0.15% CuEq shown in red

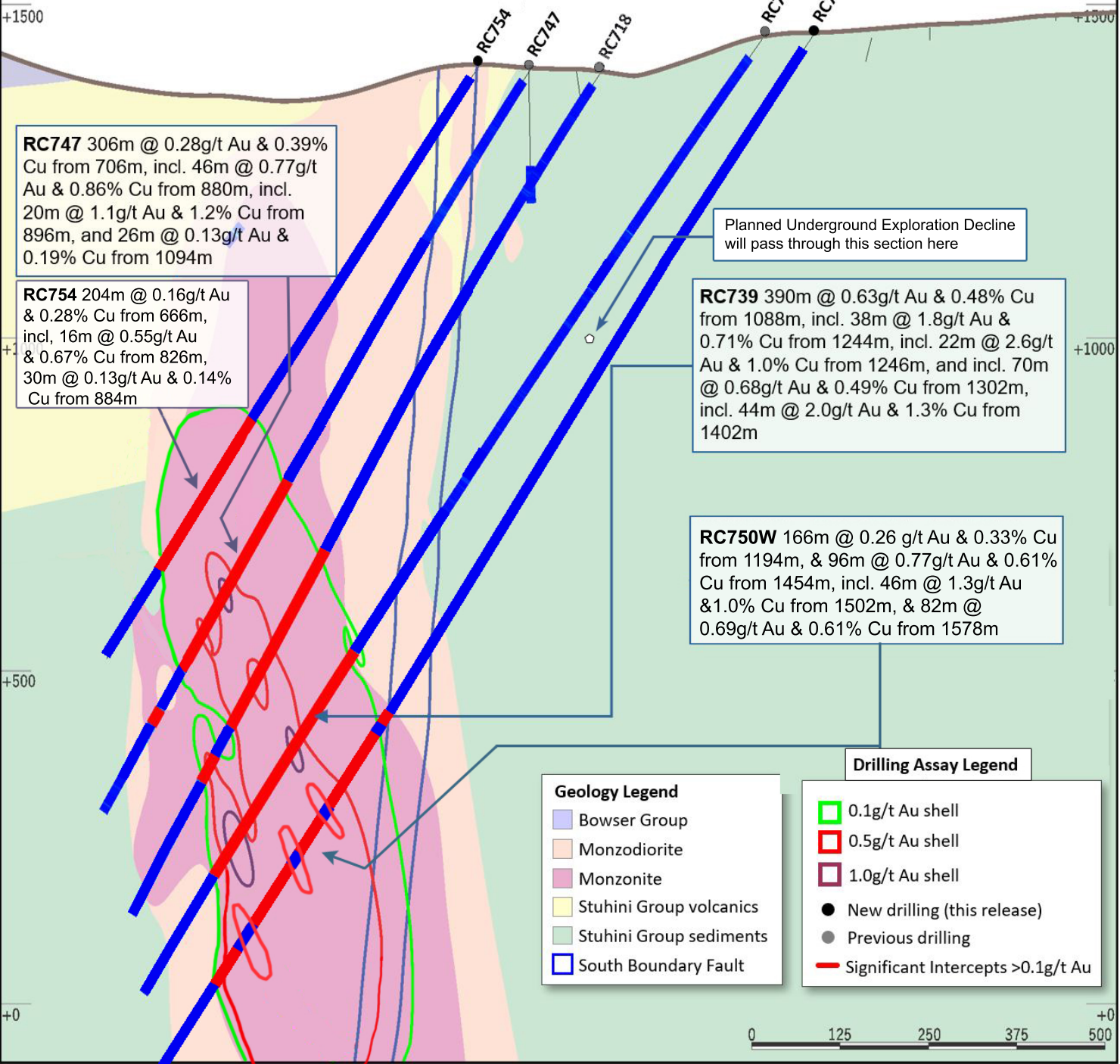
From Current News Release

CuEq = Cu% grade + (0.948 * Au g/t grade)

March 2022

Section Line 36N
 +/- 50m

Red Chris Mine: East Ridge Zone



RC747 306m @ 0.28g/t Au & 0.39% Cu from 706m, incl. 46m @ 0.77g/t Au & 0.86% Cu from 880m, incl. 20m @ 1.1g/t Au & 1.2% Cu from 896m, and 26m @ 0.13g/t Au & 0.19% Cu from 1094m

RC754 204m @ 0.16g/t Au & 0.28% Cu from 666m, incl. 16m @ 0.55g/t Au & 0.67% Cu from 826m, 30m @ 0.13g/t Au & 0.14% Cu from 884m

Planned Underground Exploration Decline will pass through this section here

RC739 390m @ 0.63g/t Au & 0.48% Cu from 1088m, incl. 38m @ 1.8g/t Au & 0.71% Cu from 1244m, incl. 22m @ 2.6g/t Au & 1.0% Cu from 1246m, and incl. 70m @ 0.68g/t Au & 0.49% Cu from 1302m, incl. 44m @ 2.0g/t Au & 1.3% Cu from 1402m

RC750W 166m @ 0.26 g/t Au & 0.33% Cu from 1194m, & 96m @ 0.77g/t Au & 0.61% Cu from 1454m, incl. 46m @ 1.3g/t Au & 1.0% Cu from 1502m, & 82m @ 0.69g/t Au & 0.61% Cu from 1578m

Geology Legend

- Bowser Group
- Monzodiorite
- Monzonite
- Stuhini Group volcanics
- Stuhini Group sediments
- South Boundary Fault

Drilling Assay Legend

- 0.1g/t Au shell
- 0.5g/t Au shell
- 1.0g/t Au shell
- New drilling (this release)
- Previous drilling
- Significant Intercepts >0.1g/t Au



Section Line 13N
+/- 50m

Red Chris Mine: Main Zone

